



AAC MILLENNIUM DERRICK BARGE

HOME PORT - PORTLAND, OR

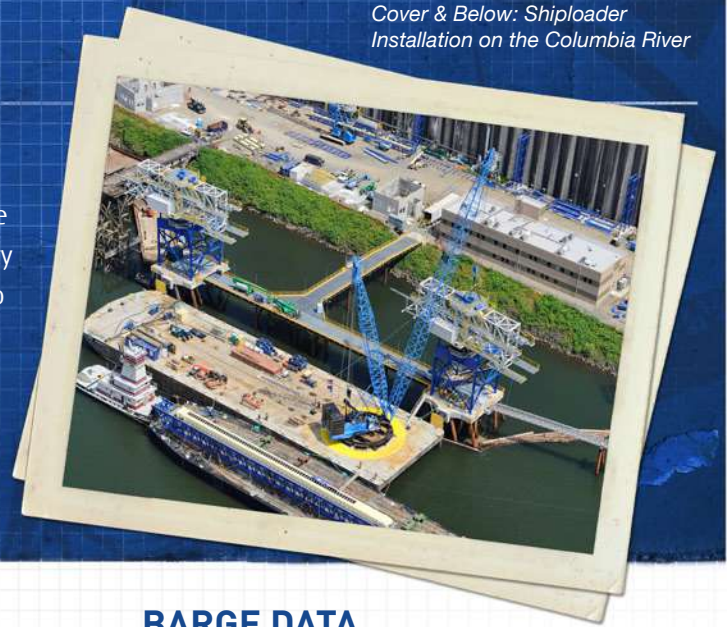
4100 Ringer Series 3
200 ton capacity @ 60 foot radius
25 ton capacity @ 250 foot radius
100 ton capacity @ 300 vertical feet
Boom lengths 140 - 280 feet
Travel height 50 feet
6-point moorage system

AAC MILLENNIUM

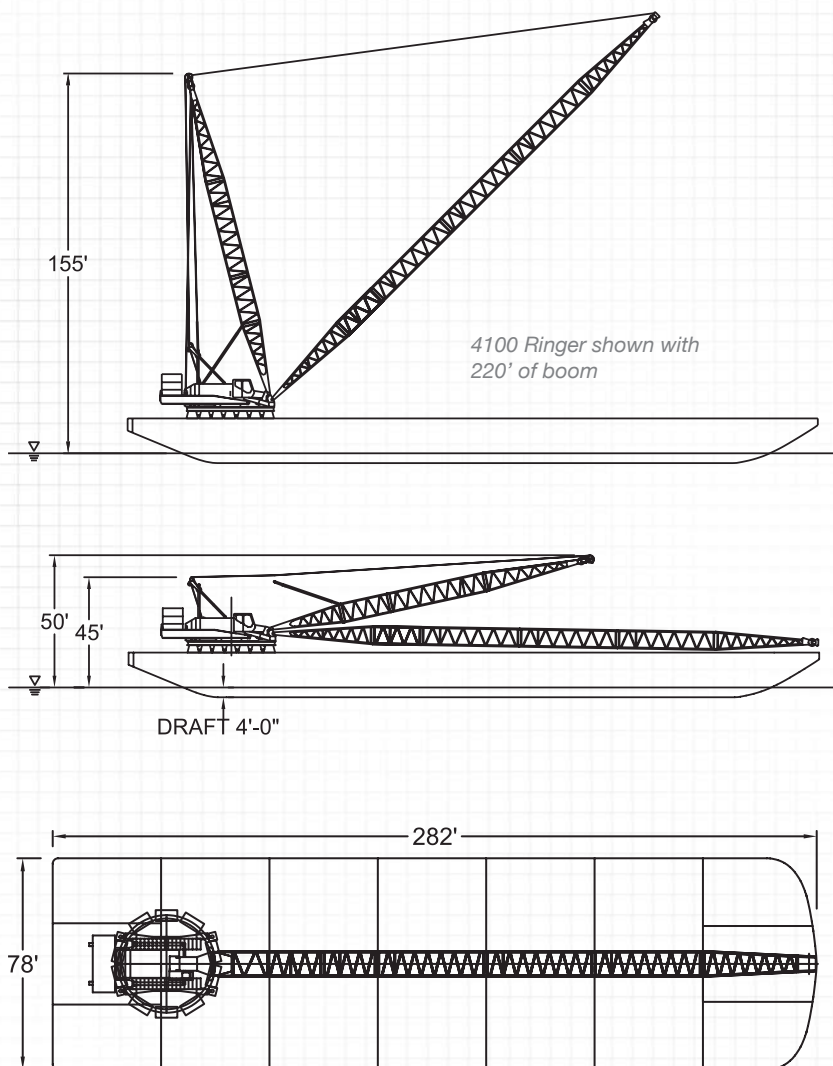
The AAC Millennium derrick barge is owned and operated by Advanced American Constructon, Inc. (AAC) of Portland, Oregon. The Lampson 4100 Crane combines the structural integrity and versatility of the Manitowoc 4100 with the safety and ease of operation due to a complete hydraulic operating system conversion.

See additional informaton on the Lampson 4100 Millennium package at www.lampsoncrane.com

Cover & Below: Shiploader Installation on the Columbia River



DIMENSIONS / LAYOUT



BARGE DATA

Length	282 ft.
Width	78 ft.
Height	18 ft.
Draft	4 ft.
Moorage	6 Point System
Deck Load	1,000 PSF

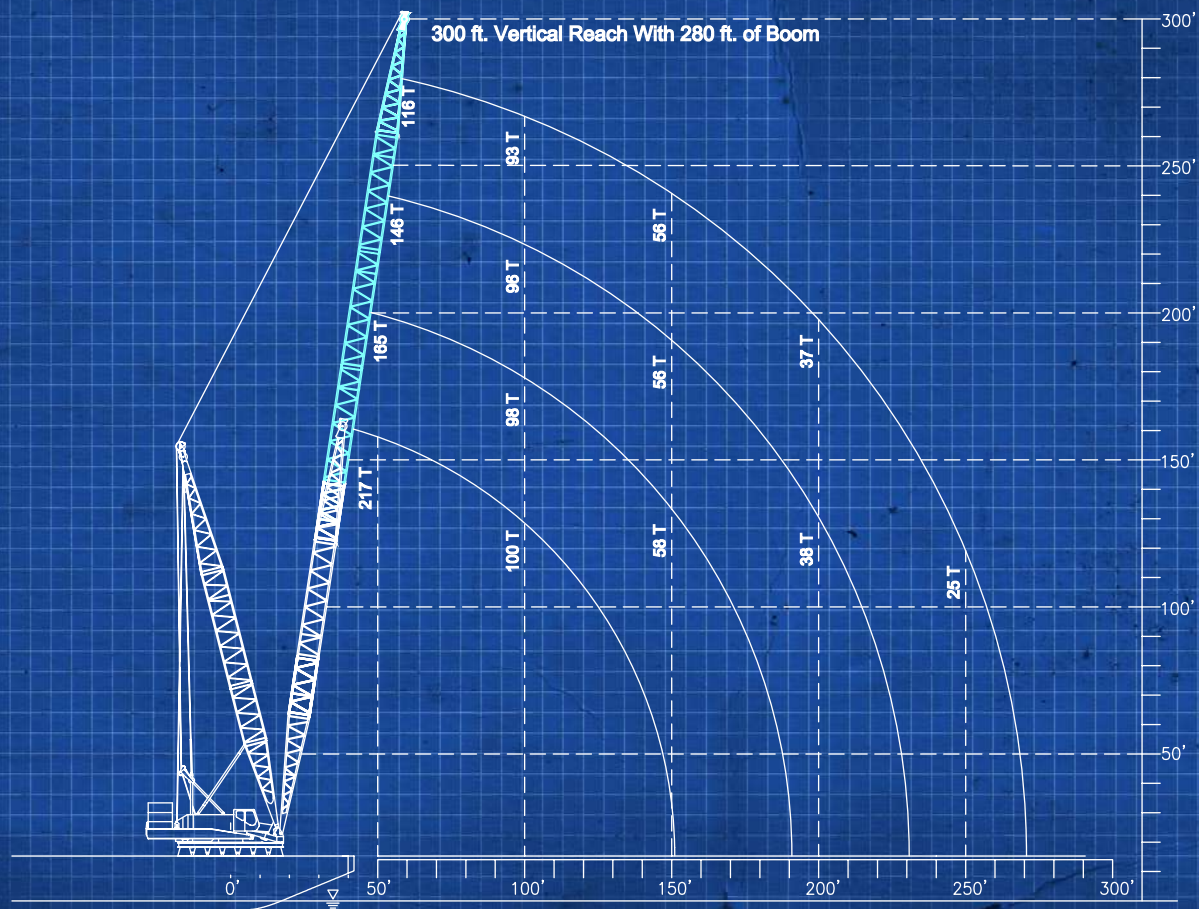
CRANE DATA (LAMPSON MILLENNIUM)

Type	4100 Ringer Series 3
Boom Lengths	140 ft. To 280 ft.
Drums	Main + 2 aux. Hydraulic oper. 1 1/4 in. wire
Low Travel Ht.	50 ft. off water
Capacities	200 tons @ 60 ft. radius 25 tons @ 250 ft. radius 100 tons @ 300 ft. vert. height 360 Degree Operation

SPECIAL CHARACTERISTICS

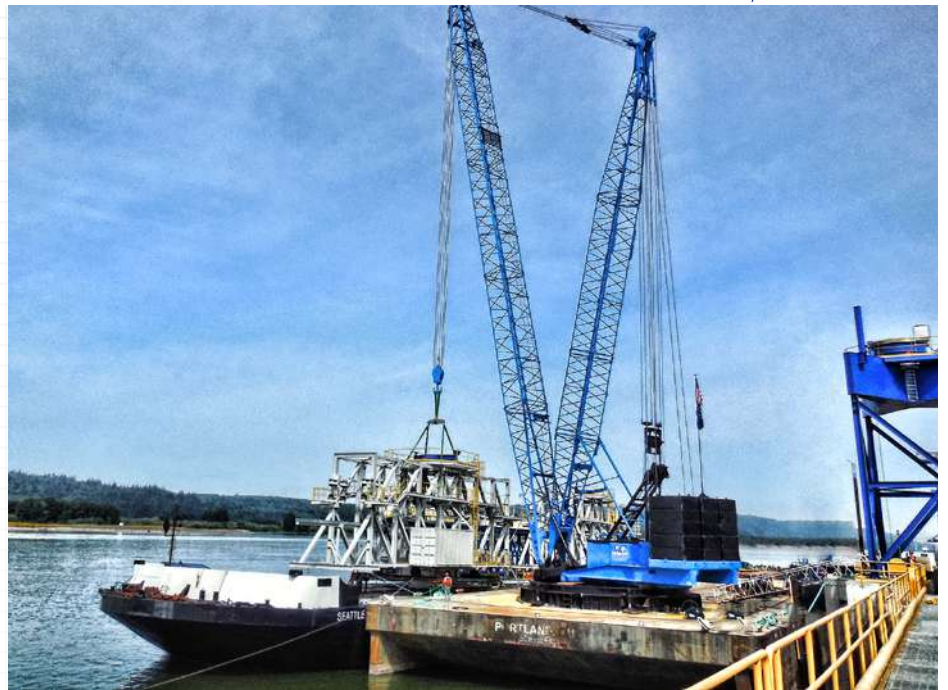
- Bow accepts roll on/off of cargo
- High capacity 16,000 sf usable deck
- 1 Day boom exchange capability
- Hydraulic hoist, swing, and boom - joystick controls
- Tier 3/4i Cummins engine - Comer drum planetaries
- LSI load monitoring system - safe lift operations
- LSI barge list and trim system - barge ballast system

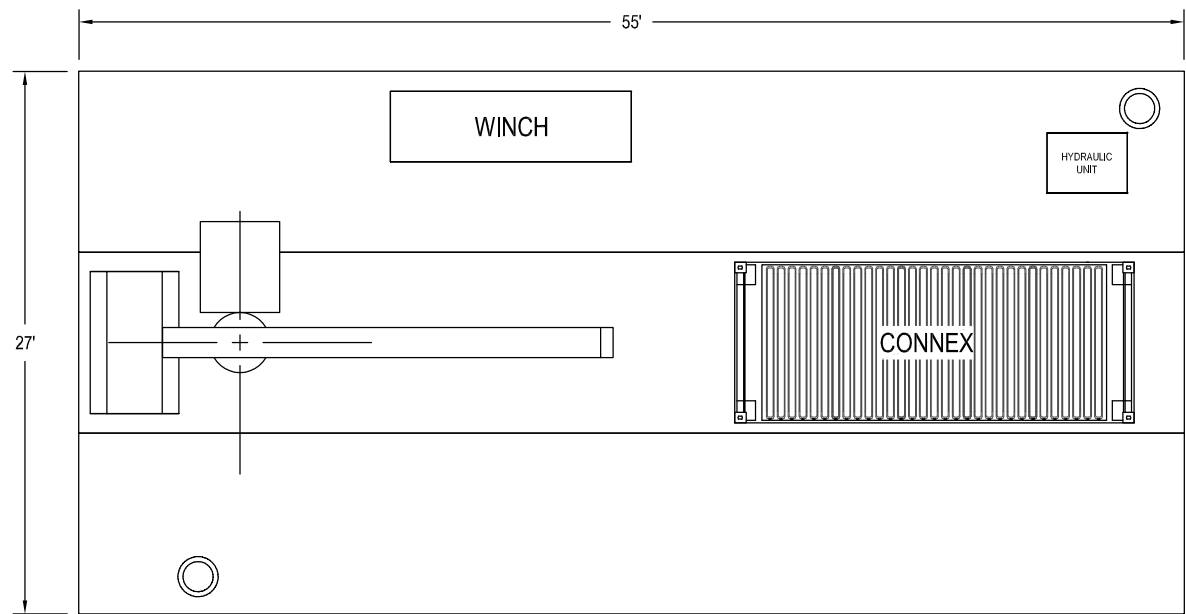
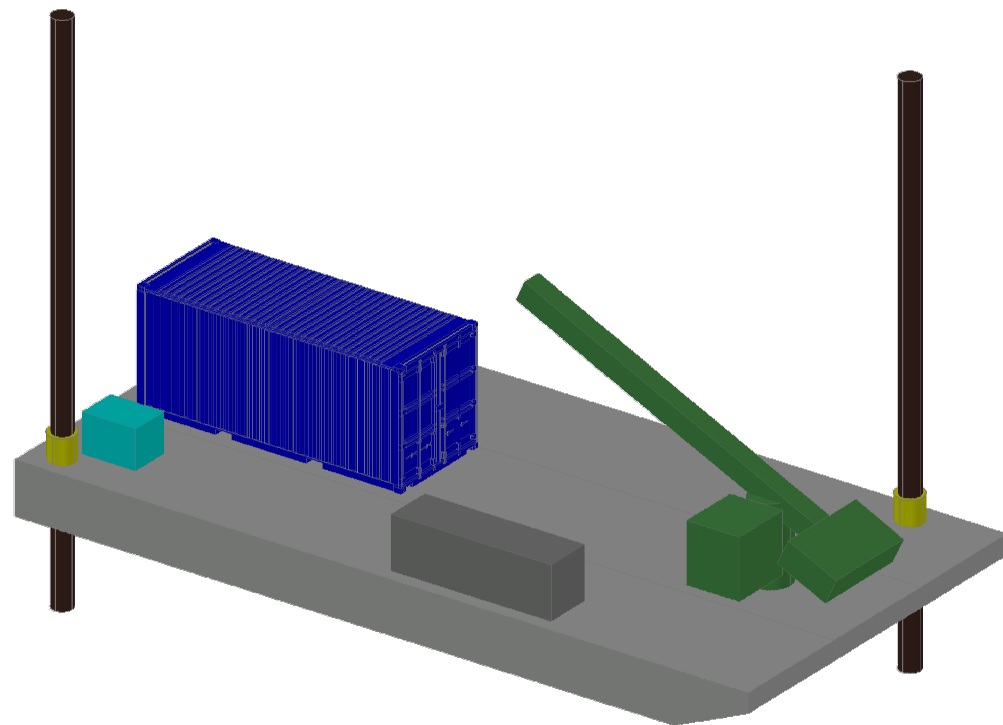
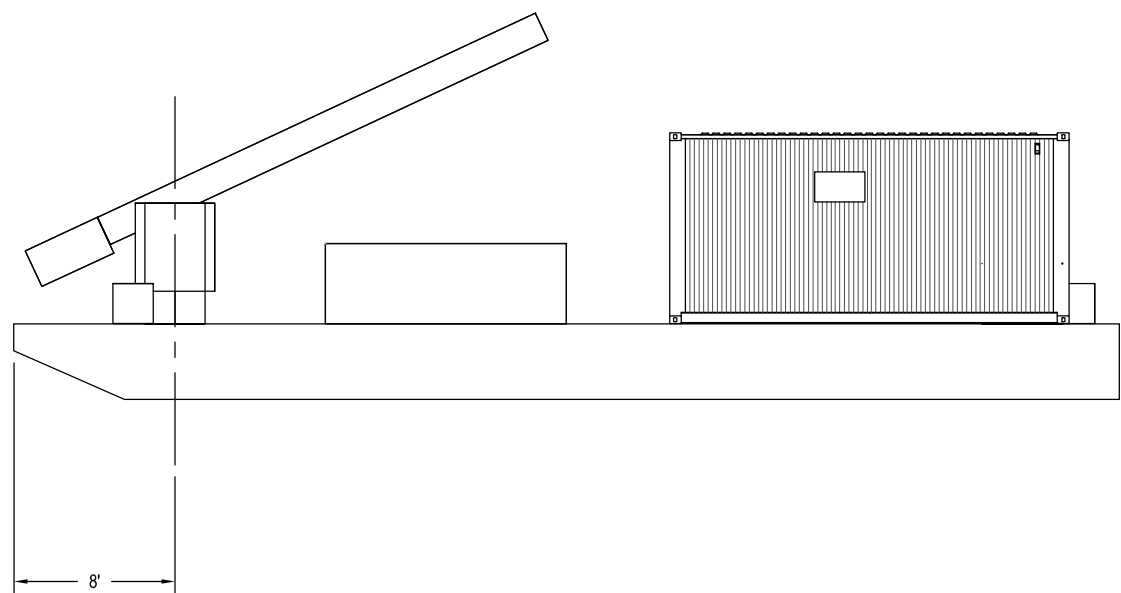
LOAD CAPACITY CHART



RIVER SYSTEM MAP

Available Mobilization throughout the Columbia, Willamette and Snake River system.





Barge Information	
Overall Length	55' - 0"
Barge Width	27' - 0"
Barge Depth	3' - 9"
Mean Draft	2'-5"
Modular Floats (55'x9'x3'-9")	3 EA
Spuds - 2 EA	62' & 58'

Engineered barge stability analysis performed by David Pierce, Chief Engineer P.E., S.E.

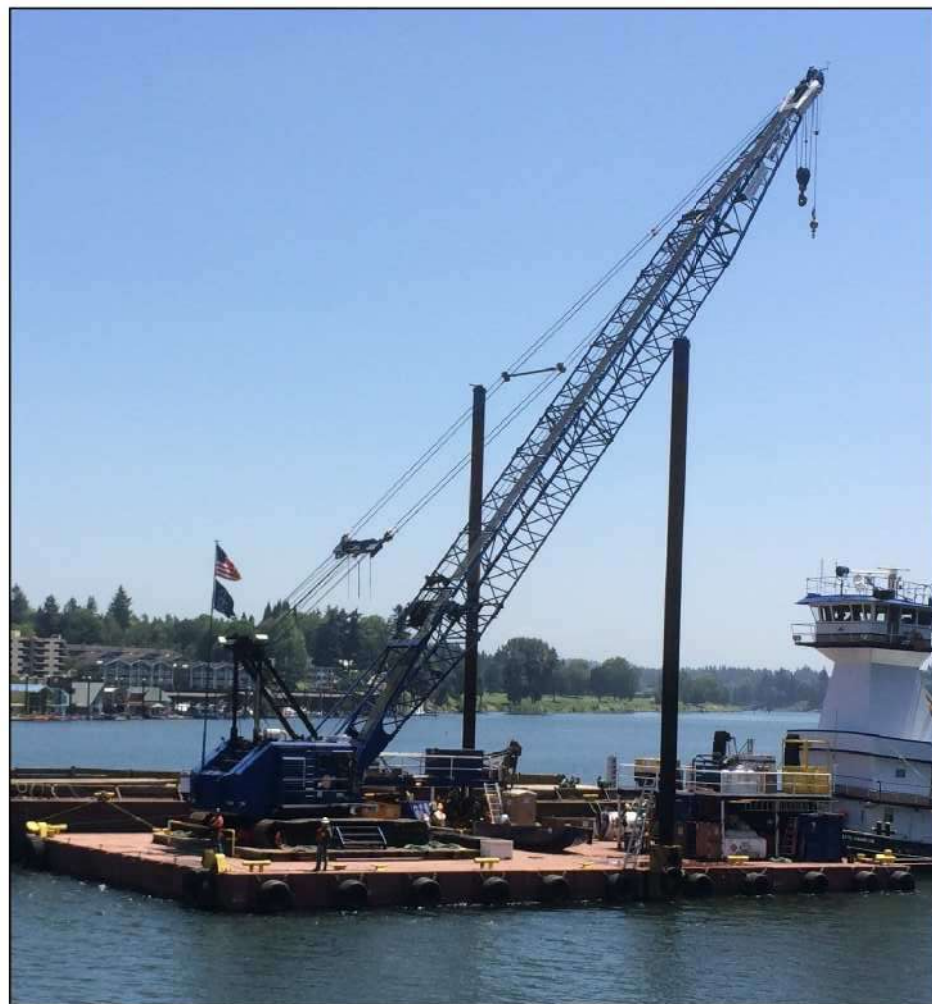
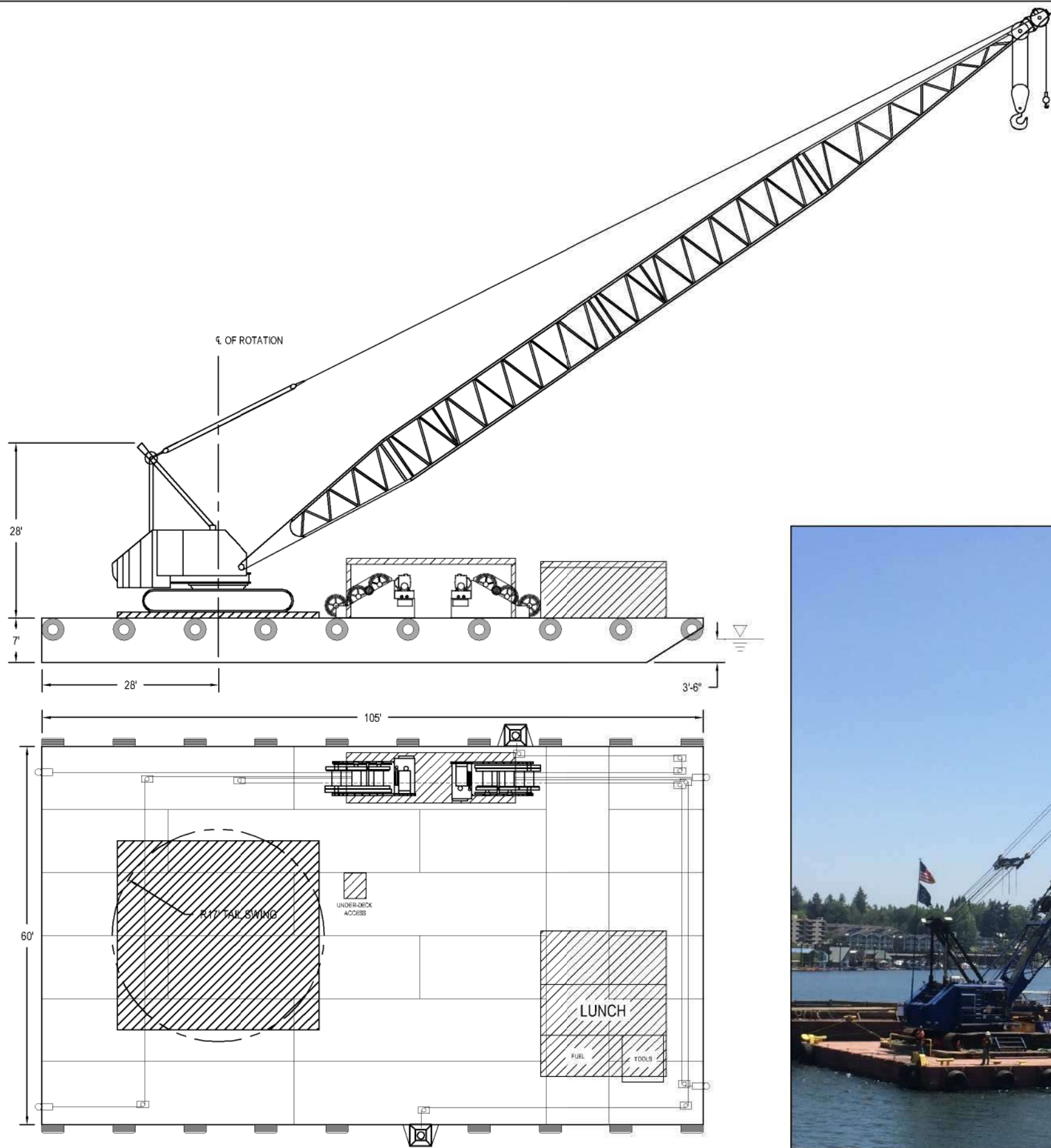
Crane Information	
Austin - Western Model 410	
Max Capacity	10 Tons
Line 1 (Main) Up to 4 Part	200' x 1/2" wire
Line 1 Capacity*	9,500 lbs
Line 2 (Whip) 1 Part	100' x 1/2" Wire
Line 2 Capacity*	9,500 lbs
Boom Length (Min & Max)**	11' to 36'

* Limited By Hydraulic Load Line Capacity
 ** Show: In Drawing With 20' Boom

Barge Equipment	
Deck Winches (4 Drum & 2 Drum)	1 EA
Hydraulic Unit - Spuds	1 EA

Shipping Information	
Trucks Required - Crane & Floats	
Flat Deck Trailer	3
Trucks Required - Deck Equipment & Connex	
Flat Deck Trailer	1



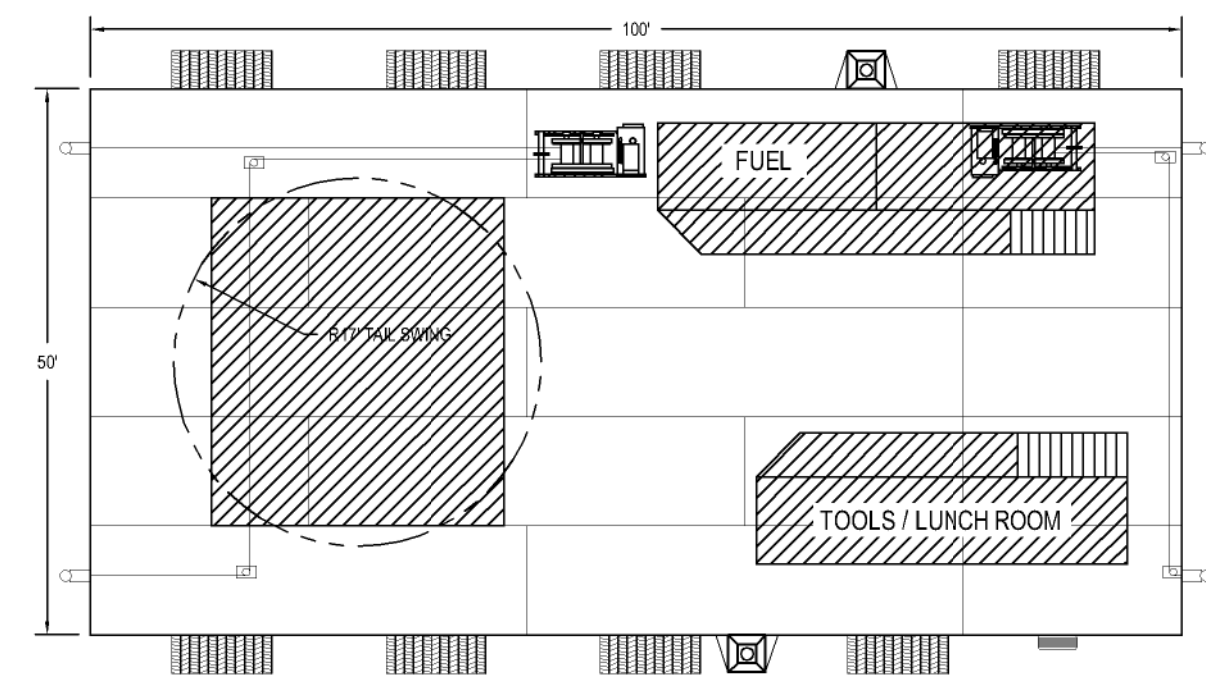
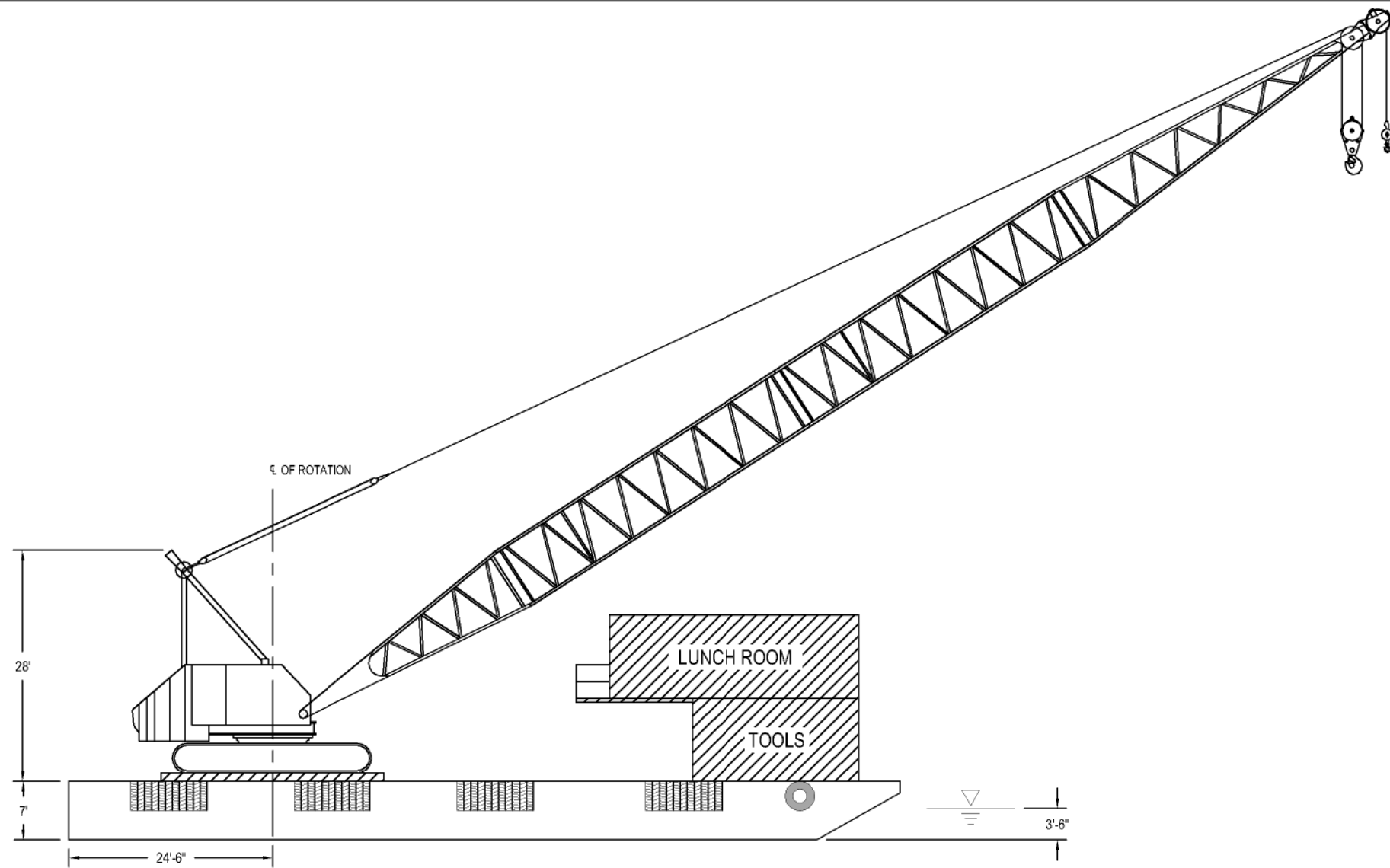


Barge Information	
Overall Length	105' - 0"
Barge Width	60' - 0"
Overall Width (Over Spud Pockets)	66' - 0"
Barge Depth	7' - 0"
Mean Draft	3' - 8"
S-70 Quadrafloats (40'x10'x7')	11 EA
S-70 Duofloats (20'x10'x7')	5 EA
S-70 End Rakes (15'x10'x7')	6 EA
Spuds	82'
Spuds (Pinned) to Water	

Barge Equipment	
45 KW Multi-Quip Genset	1 EA
Deck Winches (3 Drum)	2 EA
Spud Pockets (External)	2 EA
185 CFM Tool Air	1 EA
400 Amp Welder	1 EA
Cutting Torch Kit	1 EA
Diesel Fuel Tank (500 Gal)	1 EA
Gasoline Fuel Tank (200 Gal)	1 EA
Spill Kit	1 EA

Crane Information	
Manitowoc 4000W Vicon	
Max Capacity	175 Ton
Line 1 (Main) Up to 4 Parts	985' x 1 1/8" wire
Line 1 Capacity (Per Part Of Line)	32,500
Line 2 (Whip)	525' x 1 1/8" Wire
Line 2 Capacity*	28,300
Boom Configuration**	70' to 200'
* Limited By Boom Tip	
** Shown In Drawing With 150' Boom	

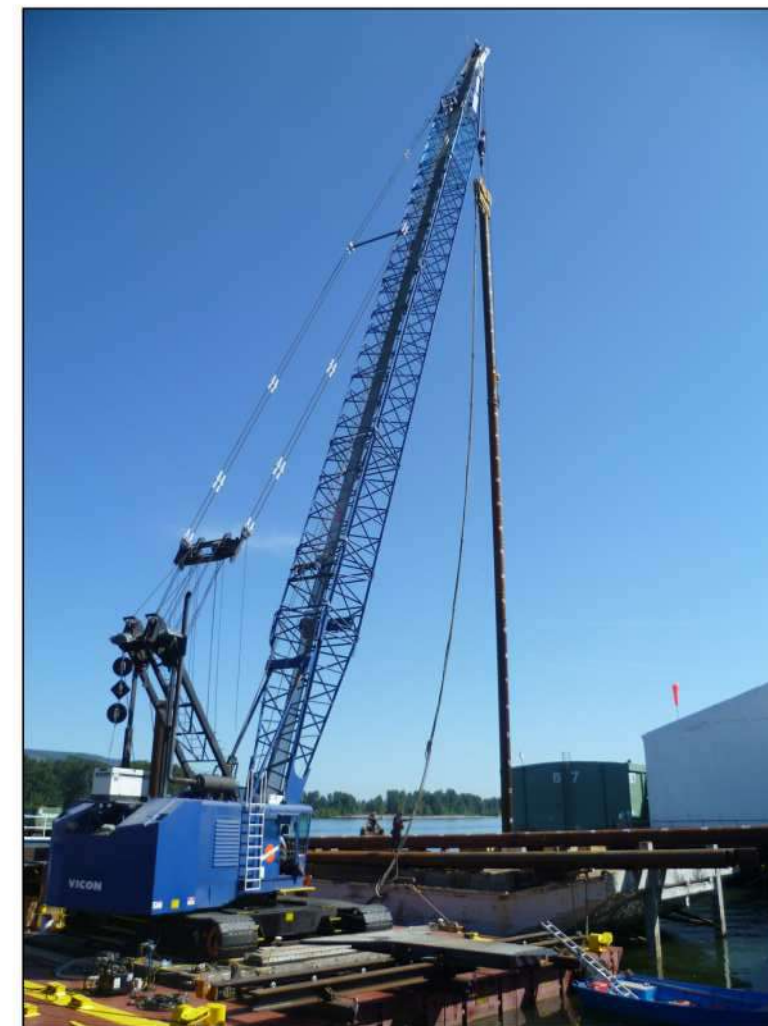
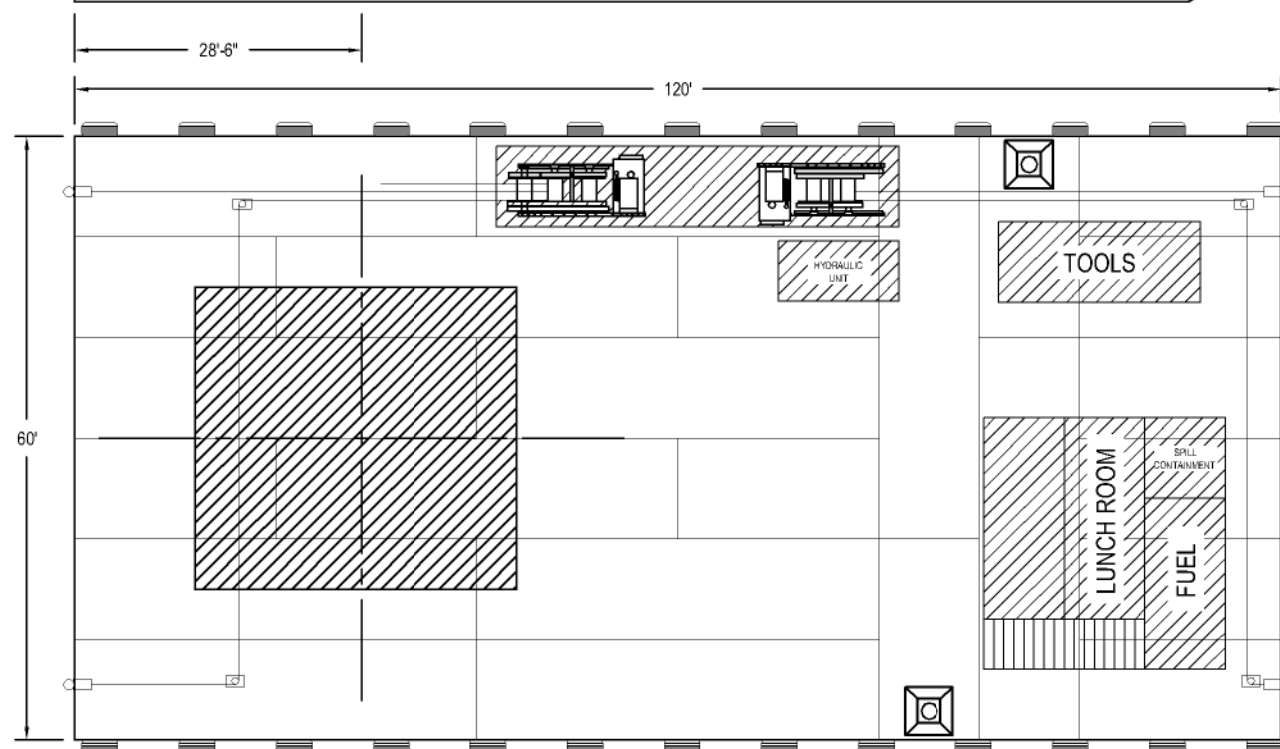
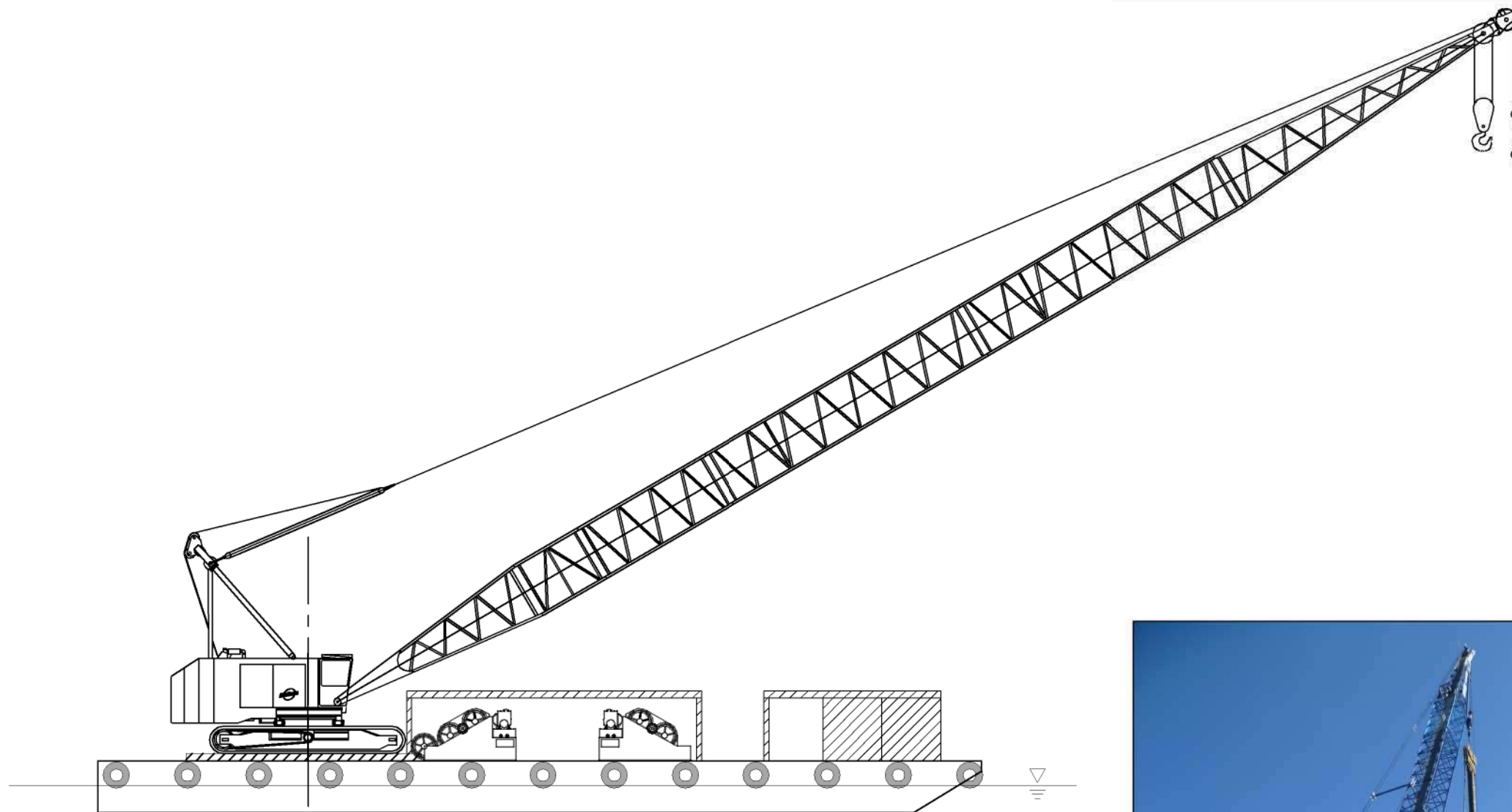
Shipping Information	
Trucks Required - 4000W Crane W/150' Boom	
Low Boy Trailer (120,000)	1
Flat Deck Trailer	5
Trucks Required - Floats	
Flat Deck Trailer	17
Trucks Required - Deck Equipment	
Flat Deck Trailer	3



Barge Information	
Overall Length	100' - 0"
Barge Width	50' - 0"
Overall Width (Over Spud Pockets)	56' - 0"
Barge Depth	7' - 0"
Mean Draft	3' - 8"
S-70 Quadrafloats (40'x10'x7')	8 EA
S-70 Duofloats (20'x10'x7')	4 EA
S-70 Loading Ramps (20'x10'x7')	5 EA
Spuds - 80' EA	2 EA
Spuds (Pinned) to Water	

Crane Information	
Manitowoc 4000	
Max Capacity	150 Ton
Line 1 (Main) Up to 4 Parts	875' x 1 1/8" wire
Line 1 Capacity (Per Part Of Line)	32,500
Line 2 (Whip)	405' x 1 1/8" Wire
Line 2 Capacity*	28,300
Boom Configuration**	60' to 180'
* Limited By Boom Tip	
** Shown In Drawing With 150' Boom	



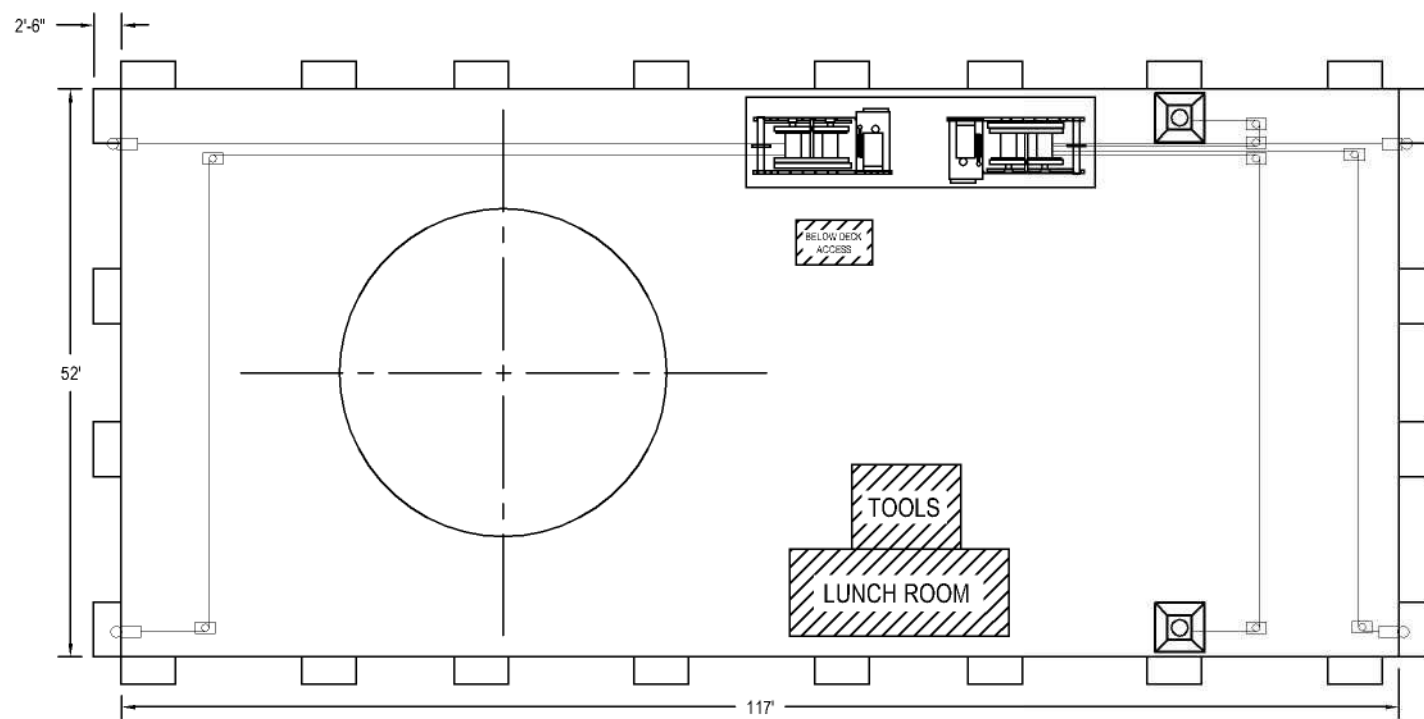
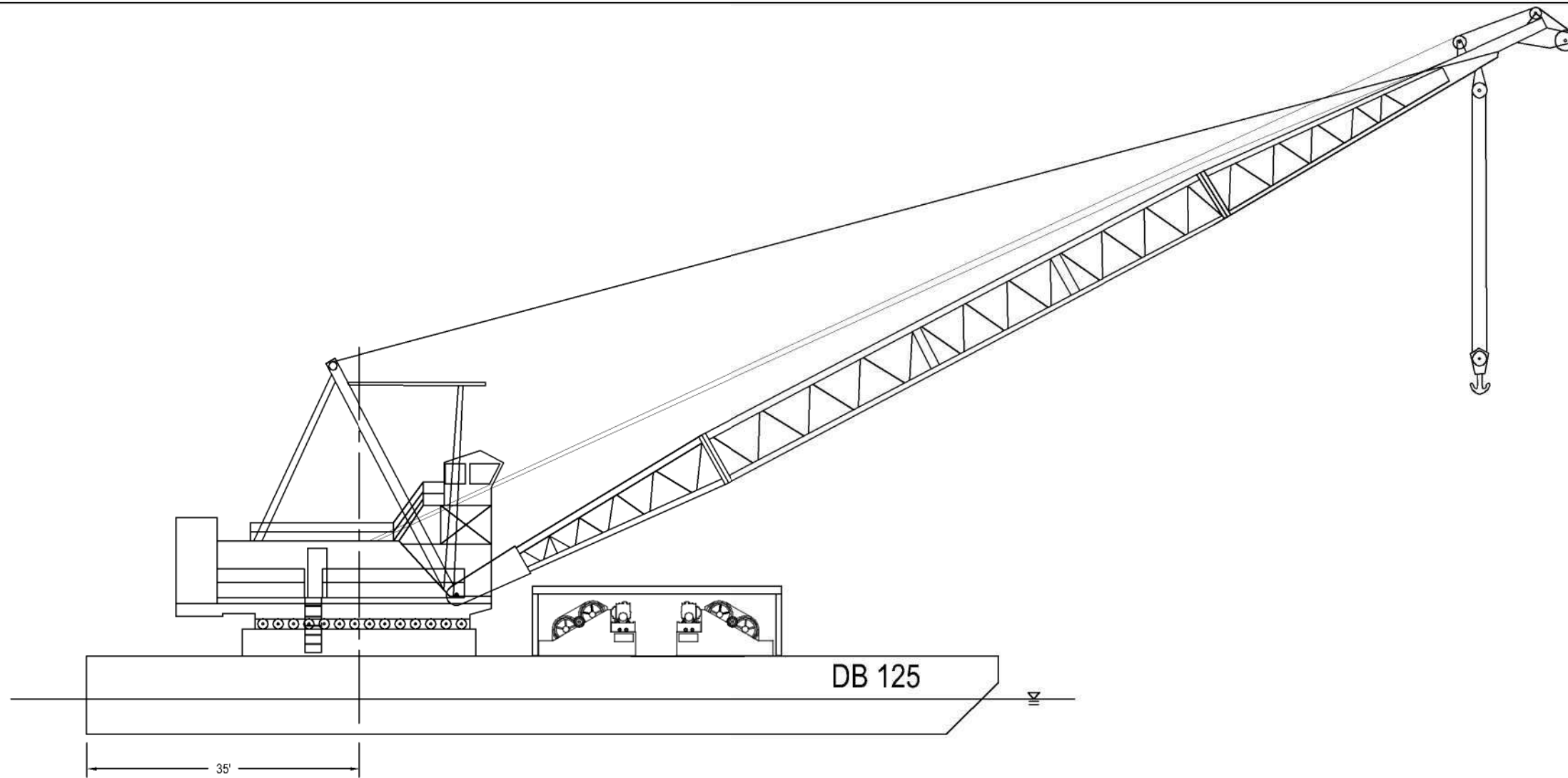


Barge Information	
Overall Length	120' - 0"
Barge Width	60' - 0"
Overall Width (Over Tires)	66' - 0"
Barge Depth	7' - 0"
Mean Draft	3' - 8"
S-70 Quadrafloats (40'x10'x7')	11 EA
S-70 Duofloats (20'x10'x7')	8 EA
S-70 Loading Ramps (20'x10'x7')	6 EA
Spuds - 2 EA	98'-7" long
Spuds (Pinned) to Water	90' EA

Crane Information	
Manitowoc 4100 Series II Vicor	
Max Capacity	230 Ton
Line 1 (Main) Up to 14 Part	1000' x 1 1/8" wire
Line 1 Capacity (Per Part Of Line)	32,500
Line 2 (Whip) 2 Part	450' x 1 1/8" Wire
Line 2 Capacity*	28,300
Line 3 (Whip) 2 Part	450' x 1 1/8" Wire
Line 3 Capacity*	28,300
Boom Configuration**	70' to 220'
* Limited By Boom Tip & Other Whip Line	
** Shown In Drawing With 180' Boom	

Barge Equipment	
45 KW Multi-Quip Genset	1 EA
Deck Winches (3 Drum & 2 Drum)	2 EA
Hydraulic Unit - Spuds	1 EA
185 CFM Tool Air	1 EA
400 Amp Welder	1 EA
Cutting Torch Kit	1 EA
Diesel Fuel Tank (1000 Gal)	1 EA
Gasoline Fuel Tank (100 Gal)	1 EA

Shipping Information	
Trucks Required - 4100 Crane W/180' Boom	
Low Boy Trailer (103,000)	1
Flat Deck Trailer	9
Trucks Required - Floats	
Flat Deck Trailer	18
Trucks Required - Deck Equipment	
Flat Deck Trailer	6



Barge Information	
Overall Length	117' - 0"
Beam Over Hull	52' - 0"
Beam Over Tires	57' - 0"
Barge Depth	10' - 0"
Mean Draft	4' - 6"
Waterline To Top Of Gantry	51' - 0"
Spuds	2 Each x 77' long
Spuds (Pinned) to Water	65'

Crane Information	
American R-30	
Max Capacity	125 Ton
Line 1 (Main) Up to 11 Parts	1850' x 1 1/8" wire
Max Line Pull	22,500
Line 2 (Whip) 2 Parts	500' x 1 1/8" Wire
Line 2 Capacity*	45,000
Boom Configuration (Main)**	130' or 150'
Boom Length (Main to Whip)**	9'
Total Boom length	139' or 159'
Distance Deck to Boom Heal	7' - 10"

* Capacity Shown In A Two Part
 ** Shown In Drawing With 150' Boom To Main

Barge Equipment	
45 KW Multi-Quip Genset	1 EA
Deck Winches (3 Drum)	2 EA
185 CFM Tool Air	1 EA
400 Amp Welder	1 EA
Cutting Torch Kit	1 EA
Diesel Fuel Tank (500 Gal)	1 EA
Gasoline Fuel Tank (100 Gal)	1 EA
Spill Kit	1 EA